

LIST OF MAJOR COMPONENTS	
ITEM	DESCRIPTION
1	3DV BODY, (121266)
2	TUBE
3	FERRULE TRI-CLAMP BW
4	ELBOW 90 DEG BPE
5	ELBOW 45 DEG BPE W/ TC
6	ELBOW 45 DEG BPE
7	ELBOW 45 DEG BPE W/ TC

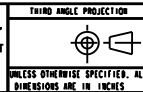
TAG NUMBERS			
	▲	▲	▲
	VALVE ASSY	FIRST VALVE	SECOND VALVE
1			

VALVE SIZE	A	A1	B	B1	C	C1	D	D1	E	E1	F	F1	G	G1	H	J
1/4" BP/BT	1.63 [41,3]	1.26 [31,9]	2.38 [60,3]	2.01 [50,9]	5.88 [149,2]	5.51 [139,8]	7.28 [184,8]	5.91 [150,0]	3.21 [81,4]	2.21 [56,0]	6.26 [158,9]	4.26 [108,1]	4.15 [105,5]	3.15 [80,1]	2.12 [54,0]	2.75 [69,9]
3/8" BP/BT	1.63 [41,3]	1.26 [31,9]	2.38 [60,3]	2.01 [50,9]	5.88 [149,2]	5.51 [139,8]	7.67 [194,9]	6.30 [160,1]	3.21 [81,4]	2.21 [56,0]	6.26 [158,9]	4.26 [108,1]	4.55 [115,6]	3.55 [90,2]	2.29 [58,2]	2.75 [69,9]
1/2" BP/BT	1.63 [41,3]	1.26 [31,9]	2.38 [60,3]	2.01 [50,9]	6.25 [158,8]	5.88 [149,4]	8.00 [203,1]	6.38 [161,9]	3.58 [91,0]	2.21 [56,0]	7.01 [178,0]	4.26 [108,1]	4.87 [123,7]	3.62 [92,0]	2.36 [59,9]	3.13 [79,4]
1/2" PF	1.63 [41,3]	1.26 [31,9]	2.56 [65,1]	2.19 [55,7]	6.63 [168,3]	6.26 [158,9]	8.37 [212,6]	6.75 [171,5]	3.64 [92,3]	2.26 [57,4]	7.10 [180,4]	4.35 [110,5]	4.87 [123,7]	3.62 [92,0]	2.41 [61,3]	3.13 [79,4]
3/4"	1.63 [41,3]	1.26 [31,9]	2.81 [71,4]	2.44 [62,0]	7.13 [171,6]	6.76 [171,6]	9.23 [234,3]	7.61 [193,2]	3.77 [95,7]	2.39 [60,8]	7.33 [186,2]	4.58 [116,4]	5.23 [132,7]	3.98 [101,0]	2.65 [67,4]	3.13 [79,4]
1"	1.63 [41,3]	1.26 [31,9]	3.00 [76,2]	2.63 [66,8]	7.50 [190,5]	7.13 [181,1]	9.87 [250,6]	8.37 [212,6]	3.87 [98,2]	2.87 [72,8]	7.50 [190,5]	5.50 [139,7]	5.49 [139,7]	4.37 [110,9]	2.86 [72,7]	3.13 [79,4]
1-1/2"	1.63 [41,3]	1.26 [31,9]	3.44 [87,3]	3.07 [77,9]	9.13 [231,8]	8.76 [222,4]	11.70 [297,1]	10.27 [260,8]	4.90 [124,6]	3.90 [99,2]	9.50 [241,3]	7.50 [190,5]	6.45 [163,8]	5.39 [136,8]	3.55 [90,1]	3.88 [98,4]
2"	1.88 [47,6]	1.26 [31,9]	4.00 [101,6]	3.38 [85,9]	11.00 [279,4]	10.38 [263,7]	13.96 [354,5]	12.09 [307,0]	6.50 [165,1]	5.25 [133,3]	12.53 [318,3]	10.03 [254,8]	7.83 [199,0]	6.58 [167,2]	4.71 [119,8]	4.88 [123,8]
2-1/2"	1.88 [47,6]	1.26 [31,9]	4.94 [125,4]	4.32 [109,7]	13.63 [346,1]	13.01 [330,3]	17.00 [431,9]	15.07 [382,8]	7.50 [190,5]	6.25 [158,8]	14.46 [367,4]	11.96 [303,9]	9.00 [228,7]	7.69 [195,4]	5.45 [138,4]	5.63 [142,9]
3"	1.88 [47,6]	1.26 [31,9]	4.94 [125,4]	4.32 [109,7]	14.38 [365,1]	13.76 [349,4]	17.96 [456,2]	16.09 [409,7]	8.75 [222,3]	7.50 [190,5]	16.83 [427,5]	14.33 [364,0]	9.96 [253,0]	8.71 [221,2]	6.35 [161,9]	6.38 [161,9]

- NOTES:
- "P" NUMBERS INDICATE PORT CONNECTION.
  - TUBE ENDS MEET OR EXCEED THE FOLLOWING TANGENT LENGTHS  
1/4"-1-1/2"=1-1/2", 2"-3"=1-3/4"
  - VALVE MUST BE INSTALLED WITH P1 VERTICALLY (UP OR DOWN) FOR OPTIMAL DRAINABILITY.
  - WELD WILL BE LEFT IN AS WELDED CONDITION.
  - SEE DRAWING 123677 FOR OPTION-2 ELBOW FABRICATION

PURE-FLO ORDER: \_\_\_\_\_ ITEM: \_\_\_\_\_  
 CUSTOMER: \_\_\_\_\_  
 CUSTOMER PO: \_\_\_\_\_  
 OTHER INFO: \_\_\_\_\_

THIS DOCUMENT IS THE SOLE PROPERTY OF ITT CORPORATION, OR ITS SUBSIDIARY, AND IS PROVIDED SUBJECT TO RETURN. IT IS ISSUED IN STRICT CONFIDENCE AND SHALL NOT BE REPRODUCED, OR COPIED, OR DISCLOSED IN WHOLE OR IN PART, OR USED AS THE BASIS FOR THE MANUFACTURE OR SALES OF APPARATUS OR PARTS TO WHICH THE DOCUMENT RELATES, WITHOUT THE EXPRESS WRITTEN CONSENT OF ITT CORPORATION, OR ITS SUBSIDIARY. THIS LEGEND SHALL BE MARKED ON ANY REPRODUCTION HEREOF, IN WHOLE OR IN PART. ALL RIGHTS TO THE INFORMATION AND DESIGN DISCLOSED HEREIN ARE RESERVED TO ITT CORPORATION, OR ITS SUBSIDIARY.



UNLESS OTHERWISE SPECIFIED, ALL DIMENSIONS ARE IN INCHES

UNLESS OTHERWISE NOTED

DATE	BY	1/4" TO 3" 3-WAY DIVERT VALVE ASSY. OPTIONS 1, 2, & 4 TCE & AWE TABULATED
DWN 01/10/11	LVV	
CHKD 01/10/11	MMA	
APVD 01/10/11	MMA	

ITT  
 www.ittpureflo.com  
 D A26575  
 SHEET 1 OF 1 B  
 MASTER DWG: A26575/0  
 ISSUE BY: \_\_\_\_\_