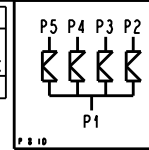


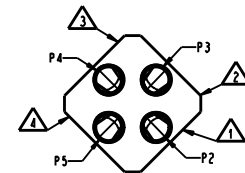
VALVE SIZE	A	A1	B	B1	C	C1	D	E	E1	F
1/4" BP/BT	1.63 [41.3]	1.26 [31.9]	2.38 [60.3]	2.01 [50.9]	5.88 [149.2]	5.51 [139.8]	15.13 [384.4]	4.26 [108.1]	3.26 [82.7]	2.75 [69.9]
3/8" BP/BT	1.63 [41.3]	1.26 [31.9]	2.38 [60.3]	2.01 [50.9]	5.88 [149.2]	5.51 [139.8]	16.12 [409.5]	4.65 [118.2]	3.65 [92.8]	2.75 [69.9]
1/2" BP/BT	1.63 [41.3]	1.26 [31.9]	2.38 [60.3]	2.01 [50.9]	6.25 [158.8]	5.88 [149.4]	17.05 [433.0]	4.81 [122.1]	3.81 [96.7]	3.13 [79.4]
1/2" PF	1.63 [41.3]	1.26 [31.9]	2.56 [65.1]	2.19 [55.7]	6.63 [168.3]	6.26 [158.9]	17.76 [451.1]	4.93 [125.1]	3.93 [99.7]	3.13 [79.4]
3/4"	1.63 [41.3]	1.26 [31.9]	2.81 [71.4]	2.44 [62.0]	7.13 [181.0]	6.76 [171.6]	18.82 [478.0]	5.10 [129.6]	4.10 [104.2]	3.13 [79.4]
1"	1.63 [41.3]	1.26 [31.9]	3.00 [76.2]	2.63 [66.8]	7.50 [190.5]	7.13 [181.1]	20.14 [511.5]	5.48 [139.1]	4.48 [113.7]	3.13 [79.4]
1-1/2"	1.63 [41.3]	1.26 [31.9]	3.44 [87.3]	3.07 [77.9]	9.13 [231.8]	8.76 [222.4]	25.86 [657.0]	6.74 [171.3]	5.74 [145.9]	3.88 [98.4]
2"	1.88 [47.6]	1.26 [31.9]	4.00 [101.6]	3.38 [85.9]	11.00 [279.4]	10.38 [263.7]	34.43 [874.4]	8.73 [221.7]	7.48 [190.0]	4.88 [123.8]
2-1/2"	1.88 [47.6]	1.26 [31.9]	4.94 [125.4]	4.32 [109.7]	13.63 [346.1]	13.01 [330.3]	40.80 [1036.2]	10.10 [256.6]	8.85 [224.9]	5.63 [142.9]
3"	1.88 [47.6]	1.26 [31.9]	4.94 [125.4]	4.32 [109.7]	14.38 [365.1]	13.76 [349.4]	47.17 [1198.2]	11.48 [291.5]	10.23 [259.7]	6.38 [161.9]

TAG NUMBERS				
VALVE ASSY	FIRST VALVE	SECOND VALVE	THIRD VALVE	FOURTH VALVE
1				

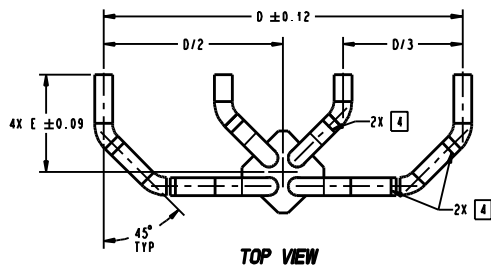


LIST OF MAJOR COMPONENTS	
ITEM	DESCRIPTION
1	4DV BODY, (121247)
2	ELBOW 45 DEG BPE
3	ELBOW 90 DEG BPE
4	TUBULE TRI-CLAMP
5	TUBING

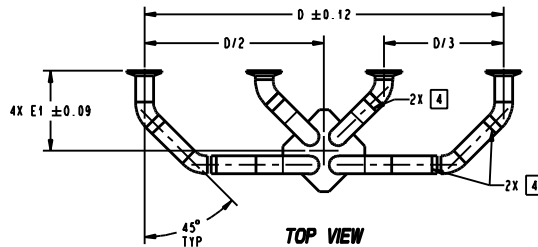
- NOTES:
- "P" NUMBERS INDICATE PORT CONNECTION.
  - TUBE ENDS MEET OR EXCEED THE FOLLOWING TANGENT LENGTHS  
1/4"-1-1/2"=1-1/2", 2"-3"-1-3/4"
  - VALVE MUST BE INSTALLED WITH P1 VERTICALLY (UP OR DOWN) FOR OPTIMAL DRAINABILITY.
  - WELD WILL BE LEFT IN AS WELDED CONDITION.



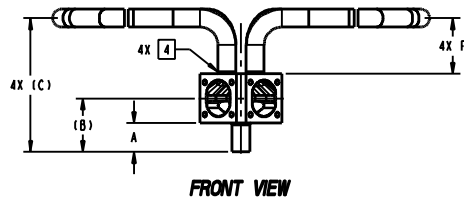
TOP VIEW  
BODY ONLY



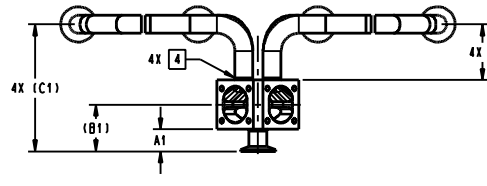
TOP VIEW



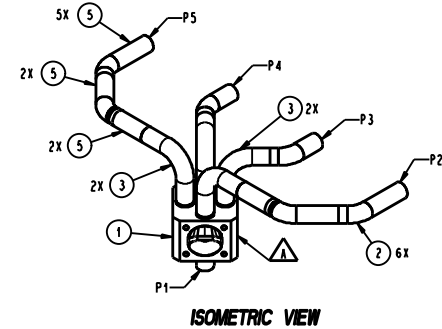
TOP VIEW



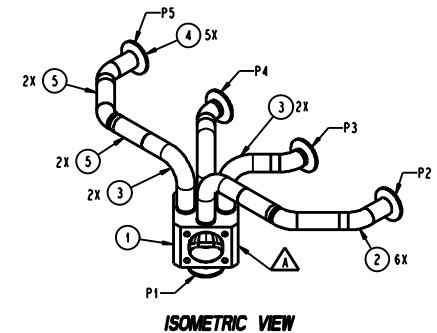
FRONT VIEW



FRONT VIEW



ISOMETRIC VIEW



ISOMETRIC VIEW

PURE-FLO ORDER: \_\_\_\_\_ ITEM: \_\_\_\_\_  
 CUSTOMER: \_\_\_\_\_  
 CUSTOMER PO: \_\_\_\_\_  
 OTHER INFO: \_\_\_\_\_

THIS DOCUMENT IS THE SOLE PROPERTY OF ITT CORPORATION, OR ITS SUBSIDIARY, AND IS PROVIDED SUBJECT TO RETURN. IT IS ISSUED IN STRICT CONFIDENCE AND SHALL NOT BE REPRODUCED, OR COPIED, OR DISCLOSED IN WHOLE OR IN PART, OR USED AS THE BASIS FOR THE MANUFACTURE OR SALES OF APPARATUS OR PARTS TO WHICH THE DOCUMENT RELATES, WITHOUT THE EXPRESS WRITTEN CONSENT OF ITT CORPORATION, OR ITS SUBSIDIARY. THIS LEGEND SHALL BE MARKED ON ANY REPRODUCTION HEREOF, IN WHOLE OR IN PART. ALL RIGHTS TO THE INFORMATION AND DESIGN DISCLOSED HEREIN ARE RESERVED TO ITT CORPORATION, OR ITS SUBSIDIARY.

THIRD ANGLE PROJECTION  
  
 UNLESS OTHERWISE SPECIFIED, ALL DIMENSIONS ARE IN INCHES

UNLESS OTHERWISE NOTED  
 UNLESS OTHERWISE SPECIFIED, ALL DIMENSIONS ARE IN INCHES

DATE BY  
 DWN 03/02/11 LFV  
 CHKD 03/02/11 MMA  
 APVD 03/02/11 MMA

1/4" TO 3" 4-WAY DIVERT VALVE ASSY. OPTION 3 TCE & AWE TABULATED  
 MASTER DWG: A26774/8 ITCN: 15346 ISSUE BY: \_\_\_\_\_ CHECK BY: \_\_\_\_\_

ITT  
 A26774  
 SHEET REV 1 OF 2 B