

Specification Sheet

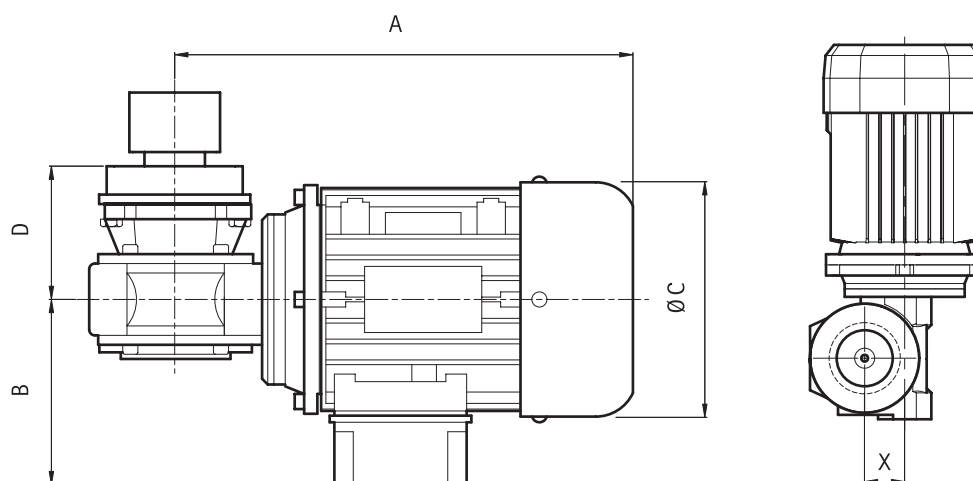
NovAseptic® Mixer, Drive Unit, GMP

Catalogue Number:

GM#-4#-64##

Product Description

The NovAseptic® mixers offer a complete solution for mixing throughout the process line and are designed for a wide variety of mixing applications in the pharmaceutical and biotechnology industries.



Catalogue No. Structure

GM	#	/	4#	#	#	-	64##
Mixer	Size		Speed Counter Option A = Speed Counter compatible Drive Unit B = Drive Unit with Speed Counter	Shaft Option 0 = 0mm standard 1 = 60 mm extension (only for GMP50) 2 = 100 mm extension	Drive Unit Color 1 = Green		Motor

Nominal Dimensions in mm.

Catalogue No.	A	B	C	D	X	Mixer Model
GM05/4A01-6410	278.5	115	130	97	31	GMP50
GM05/4A11-6410	278.5	115	130	140	31	GMP50
GM05/4B01-6410	278.5	115	130	97	31	GMP50
GM05/4B11-6410	278.5	115	130	140	31	GMP50
GM1/4A01-6410	278.5	115	130	85	31	GMP100
GM1/4A21-6410	278.5	115	130	170	31	GMP100
GM1/4B01-6410	278.5	115	130	85	31	GMP100
GM1/4B21-6410	278.5	115	130	170	31	GMP100
GM5/4A01-6420	300.5	124	145	85	31	GMP500
GM5/4A21-6420	300.5	124	145	170	31	GMP500
GM5/4B01-6420	300.5	124	145	85	31	GMP500
GM5/4B21-6420	300.5	124	145	170	31	GMP500
GM10/4A01-6420	300.5	124	145	90	31	GMP1000
GM10/4A21-6420	300.5	124	145	170	31	GMP1000
GM10/4B01-6420	300.5	124	145	90	31	GMP1000
GM10/4B21-6420	300.5	124	145	170	31	GMP1000
GM20/4A01-6430	335	120	163	103	40	GMP2000
GM20/4A21-6430	335	120	163	191	40	GMP2000
GM20/4B01-6430	335	120	163	103	40	GMP2000
GM20/4B21-6430	335	120	163	191	40	GMP2000
GM50/4A01-6440	370	120	163	103	40	GMP5000
GM50/4A21-6440	370	120	163	195	40	GMP5000
GM50/4B01-6440	370	120	163	103	40	GMP5000
GM50/4B21-6440	370	120	163	195	40	GMP5000
GM100/4A01-6450	424.5	128	183	121	50	GMP10000
GM100/4A21-6450	424.5	128	183	215	50	GMP10000
GM100/4B01-6450	424.5	128	183	121	50	GMP10000
GM100/4B21-6450	424.5	128	183	215	50	GMP10000
GM200/4A01-6465	456	169	195	125	75	GMP20000
GM200/4A21-6465	456	169	195	220	75	GMP20000
GM200/4B01-6465	456	169	195	125	75	GMP20000
GM200/4B21-6465	456	169	195	220	75	GMP20000
GM300/4A01-6465	456	169	195	125	75	GMP30000
GM300/4A21-6465	456	169	195	220	75	GMP30000
GM300/4B01-6465	456	169	195	125	75	GMP30000
GM300/4B21-6465	456	169	195	220	75	GMP30000

Specifications

Net Weight (approximate)

Mixer Assembly	GMP50	GMP100	GMP500	GMP1000	GMP2000	GMP5000	GMP10000	GMP20000	GMP30000
Weight kg (lb)	8 (17.6)	8 (17.6)	10 (22.0)	10 (22.0)	17 (37.5)	18 (39.7)	29 (64.0)	45 (100.0)	47 (103.0)

General Motor Data

Voltage	230/400V AC - 50 Hz and 460 V - 60 Hz								
Number of Poles	2	2	2	2	2	2	2	4	4
Degree of Protection	IP 55								
Insulating Class	The Quality Assurance system ensure the quality and traceability at all stages of the process.								
Ventilation	For non-standard NovAseptic® Mixer Options, please contact us for information.								
Color	Green, complies with the Code of Federal Regulations (FDA), US 21 CFR 170 - 199.								
Oil	Synthetic, complies with the Code of Federal Regulations (FDA) 21 CFR								
Certified	CE / CSA/ UL								
Thermistor	1 (PTC, 155 °C)								

Drive Unit Specifications (motor and frame)

	Brand	Max Power (kW)		Max Current (A)		Frame (IEC)
		50Hz	60Hz	230 VAC*	400 VAC*	
GMP50	Nord™ 63L2	0.25	0.30	1.21	0.7	63/B14
GMP100	Nord™ 63L2	0.25	0.30	1.21	0.7	63/B14
GMP500	Nord™ 71L/2	0.55	0.65	2.17	1.25	71/B14
GMP1000	Nord™ 71L/2	0.55	0.65	2.17	1.25	71/B14
GMP2000	Siemens™ 80S/2 IE2	0.75	0.90	2.97	1.71	80/B14
GMP5000	Siemens™ 80L/2 IE2	1.10	1.30	3.91	2.25	80/B14
GMP10000	Siemens™ 90L/2 IE2	2.2	2.64	7.65	4.40	90/B14
GMP20000	Nord™ 100AH/4 IE2	3.00	3.00	11.4	6.59	100/B14
GMP30000	Nord™ 100AH/4 IE2	3.00	3.00	11.4	6.59	100/B14

Drive Unit Specifications (gearbox and complete drive unit)

Mixer Size	Type Nord	Gear Box Ratio (i)	Outer Driving Head Torque (Nm)	Design Speed (rpm)*
GMP50	SK1SI31	7.5	1	50 - 490
GMP100	SK1SI31	7.5	2	50 - 490
GMP500	SK1SI31	7.5	6	50 - 490
GMP1000	SK1SI31	7.5	8	50 - 490
GMP2000	SK1SI40	7.5	13	50 - 490
GMP5000	SK1SI40	7.5	26	50 - 490
GMP10000	SK1SI50	7.5	35	50 - 450
GMP20000	SK1SI75	5	60	35 - 335
GMP30000	SK1SI75	7.5	150	25 - 245

Additional Information

Environment Temperature**	0 to 40 °C (32 to 104 °F)
Design Pressure	Atmospheric pressure
Operating Speed	Maximum operating speed has to be validated for each process individually, depending on volume, viscosity etc. A variable frequency drive (VFD) must be used with all NovAseptic® mixers.
Labeling	Each Drive Unit is individually labeled for full traceability according to our QA procedures.
Packaging	The Drive Unit is packaged in a closed box.
Quality Control	Our Quality Assurance System guarantees the control and traceability at all stages of the manufacturing.
Options	For non-standard NovAseptic® Mixer Options, please contact your local sales representative for information.

*Note: Design Speed is the mechanical limit.

**Note: The assembled NovAseptic® Mixer may have different design temperature and/or pressure limits. The weakest part in the assembled product sets the final permitted design temperature and pressure limits.



www.emdmillipore.com

EMD Millipore and the M mark are registered trademarks of Merck KGaA, Darmstadt, Germany. NovAseptic is a registered trademark of Millipore AB. All trademarks belonging to third parties are the property of their respective owners. Specifications subject to change without notice. Lit. No. SP1004EN00 PS-SBU-13-07736 Rev. G 10/2014 Printed in the USA. ©2014 EMD Millipore Corporation, Billerica, MA 01821 U.S.A. All rights reserved.

To place an order or receive technical assistance

In the U.S. and Canada, call toll-free [1-800-645-5476](tel:1-800-645-5476)

For other countries across Europe and the world, please visit www.millipore.com/offices

For Technical Service, please visit www.millipore.com/techservice