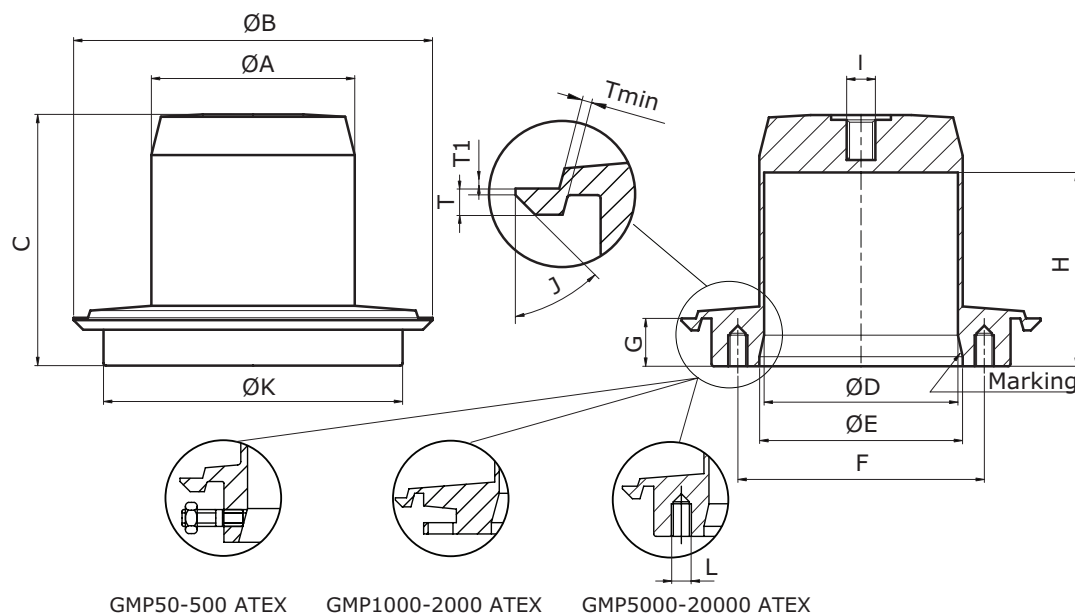


## NovAseptic® Mixer Tank Plate, GMP ATEX

### Product Description

NovAseptic® mixers offer a complete solution for mixing throughout the process line and are designed for a wide variety of mixing applications in the pharmaceutical and biotechnology industries.



### Nominal Dimensions in mm (in.)

AX###/33*	A	B	C	D	E	F	G	H	I	J	K	L	T	T1	Tmin	NovAseptic® ATEX GMP Mixer assembly type
AX05/33	32 (1.26)	72 (2.83)	56 (2.20)	81 (3.19)	38 (1.50)	—	18 (0.71)	44 (1.73)	M6	45°	50 (1.97)	—	3 (0.12)	1 (0.04)	2.5 (0.10)	GMP50 ATEX
AX1/33	54 (2.13)	90 (3.54)	58 (2.28)	50 (1.97)	56 (2.20)	—	19 (0.75)	—	M6	45°	64 (2.52)	—	4 (0.16)	1 (0.04)	1.8 (0.07)	GMP100 ATEX
AX5/33	54 (2.13)	90 (3.54)	68 (2.68)	50 (1.97)	56 (2.20)	—	19 (0.75)	56 (2.20)	M6	45°	64 (2.52)	—	4 (0.16)	1 (0.04)	1.8 (0.07)	GMP500 ATEX
AX10/33	62 (2.44)	150 (5.91)	69 (2.72)	58 (2.28)	65 (2.56)	110 (4.33)	17 (0.67)	56 (2.20)	M6	45°	125 (4.92)	—	4 (0.16)	1 (0.04)	2.2 (0.09)	GMP1000 ATEX
AX20/33	85 (3.35)	150 (5.91)	73 (2.87)	81 (3.19)	85 (3.35)	110 (4.33)	20 (0.79)	58 (2.28)	M10	45°	125 (4.92)	—	4 (0.16)	1 (0.04)	2.3 (0.09)	GMP2000 ATEX
AX50/33	104 (4.09)	160 (6.30)	73 (2.87)	100 (3.94)	104 (4.09)	116 (4.57)	13 (0.52)	54 (2.13)	M12	45°	128 (5.04)	M8	6 (0.24)	1.5 (0.06)	4.2 (0.17)	GMP5000 ATEX
AX100/33	85 (3.35)	150 (5.91)	105 (4.13)	81 (3.19)	85 (3.35)	105 (4.13)	20 (0.79)	81 (3.19)	M12	45°	125 (4.92)	M8	5 (0.20)	1 (0.04)	2.4 (0.09)	GMP10000 ATEX
AX200/33	168 (6.61)	240 (9.45)	94 (3.70)	164 (6.46)	168 (6.61)	187 (7.36)	25 (0.98)	69 (2.72)	M12	45°	207 (8.15)	M10	6 (0.24)	2 (0.08)	5.4 (0.21)	GMP20000 ATEX

\*Note: NovAseptic® Gauge 1 (G91-###) and NovAseptic® Gauge 2 (G92-###) are not included. These may be purchased separately.

## Specifications

Net Weight (approximate)								
Tank Plate	AX05/33	AX1/33	AX5/33	AX10/33	AX20/33	AX50/33	AX100/33	AX200/33
Weight kg (lb)	0.5 (1.1)	0.5 (1.1)	0.6 (1.3)	2 (4.4)	2 (4.4)	2.5 (5.51)	3 (6.6)	8 (18)

Welding Diameter								
Tank Plate	AX05/33	AX1/33	AX5/33	AX10/33	AX20/33	AX50/33	AX100/33	AX200/33
Diameter mm (in)	Ø72 (Ø2.83)	Ø90 (Ø3.54)	Ø90 (Ø3.54)	Ø150 (Ø5.91)	Ø150 (Ø5.91)	Ø160 (Ø6.30)	Ø150 (Ø5.91)	Ø240 (Ø9.45)

Material		
Bar	Stainless steel in compliance with	
Material Code	316L	EN 1.4435
Technical Requirements	ASME® SA-479	EN 10272

Additional Information	
Surface Roughness	Surface Ra ≤ 0.38 µm (15 µin)
Surface Treatment	Liquid contact surface, manually polished
Design Temperature	-80 to 135°C (-112 to 275°F)
Design Pressure	-1 to 10 bar(g) (-14.5 to 145 psi(g))
Note	The assembled NovAseptic® Mixer may have different design temperature and/or pressure limits. The weakest component in the assembled product determines the maximum temperature and pressure limits.
Packaging	The tank plate is packaged in a closed box.
Quality Control	Our Quality Assurance System guarantees the control and traceability at all stages of the manufacturing.
Liquid viscosity	1 to 800 cP max
Requirements	<p>The Tank Plate is designed to meet requirements for USA, ASME VIII Div 2. Stresses in Tank Plate due to internal pressure have been analyzed by FEM.</p> <p>The NovAseptic Tank plate is not in the scope of the PED directive 2014/68/UE. However they have been designed and evaluated for assembly by welding at a bottom of a vessel with a max allowable pressure of 10 bar and a max allowable temperature of 200°C.</p>

The tank plate must be used with the appropriate ATEX GMP drive unit, male bearing and mixing head.

## Technical Assistance

For more information, please visit [SigmaAldrich.com](http://SigmaAldrich.com) for up-to-date worldwide contact information

