

Specification Sheet

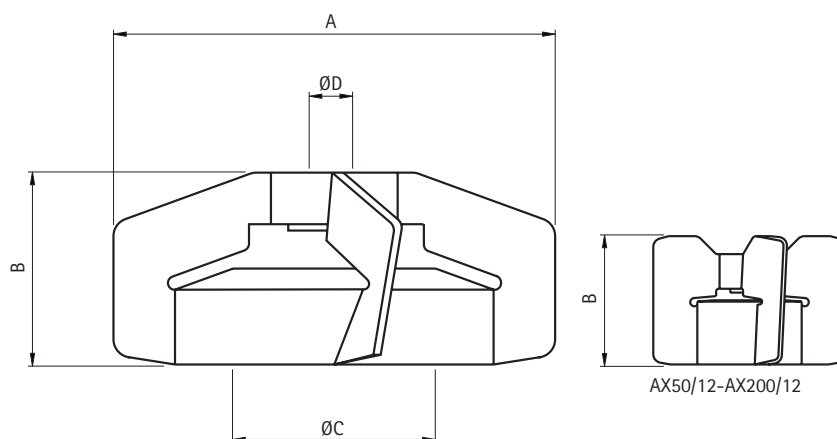
NovAseptic[®] Mixer Mixing Head, GMP ATEX

Catalogue Numbers:

AX###/12
AX###/12EP
AX##/120
AX##/120EP

Product Description

NovAseptic[®] mixers offer a complete solution for mixing throughout the process line and are designed for a wide variety of mixing applications in the pharmaceutical and biotechnology industries.




Nominal Dimensions in mm (in.)

AX###/12#	A	B	C	D	Compatible Mixer
AX05/12	96 (3.78)	52 (2.05)	34 (1.34)	12 (0.47)	GMP50 ATEX
AX05/12EP	96 (3.78)	52 (2.05)	34 (1.34)	12 (0.47)	GMP50 ATEX
AX1/12	120 (4.72)	53 (2.09)	56 (2.20)	12 (0.47)	GMP100 ATEX
AX1/12EP	120 (4.72)	53 (2.09)	56 (2.20)	12 (0.47)	GMP100 ATEX
AX5/120	142 (5.59)	71 (2.80)	56 (2.20)	20 (0.79)	GMP500 ATEX
AX5/120EP	142 (5.59)	71 (2.80)	56 (2.20)	20 (0.79)	GMP500 ATEX
AX10/120	160 (6.30)	71 (2.80)	64 (2.52)	20 (0.79)	GMP1000 ATEX
AX10/120EP	160 (6.30)	71 (2.80)	64 (2.52)	20 (0.79)	GMP1000 ATEX
AX20/12	184 (7.24)	73 (2.87)	87 (3.43)	20 (0.79)	GMP2000 ATEX
AX20/12EP	184 (7.24)	73 (2.87)	87 (3.43)	20 (0.79)	GMP2000 ATEX
AX50/12	192 (7.56)	120 (4.72)	106 (4.17)	30 (1.18)	GMP5000 ATEX
AX50/12EP	192 (7.56)	120 (4.72)	106 (4.17)	30 (1.18)	GMP5000 ATEX
AX100/12	220 (8.66)	150 (5.91)	87 (3.43)	30 (1.18)	GMP10000 ATEX
AX100/12EP	220 (8.66)	150 (5.91)	87 (3.43)	30 (1.18)	GMP10000 ATEX
AX200/12	273 (10.75)	130 (5.12)	170 (6.69)	30 (1.18)	GMP20000 ATEX
AX200/12EP	273 (10.75)	130 (5.12)	170 (6.69)	30 (1.18)	GMP20000 ATEX

Specifications

Net Weight (approximate)								
Mixing Head	AX05/12	AX1/12	AX5/120	AX10/12	AX20/12	AX50/12	AX100/12	AX200/12
Weight kg (lb)	0.5 (1.1)	0.9 (2.0)	1.3 (2.87)	1.7 (3.75)	1.8 (3.97)	3.4 (7.50)	5.1 (11.2)	6.7 (14.8)

Material					
	Bar		Plate		Female Bearing
	Stainless steel in compliance with		Stainless steel in compliance with		
Material Code	316L	EN 1.4435	316L	EN 1.4435	Ceramic SiC (SsiC), USP Class VI 121°C

Additional Information	
Technical Data	Class Ex II 1 GD Category 1 Explosion group IIC Temperature T4  II 1 GD c T4 0 °C ≤ Ta ≤ +40 °C
Surface Roughness	Surface Ra ≤ 0.38 µm (15 µm)
Surface Treatment	Manually polished or electropolished
Operating Temperature	+5 to +135 °C (+41 to +275 °F)
Note	The assembled NovAseptic® Mixer may have different design temperature and/or pressure limits. The weakest component in the assembled product determines the maximum design temperature and pressure limits.
Labeling	Each Mixing Head is individually labeled for full traceability according to our QA routines.
Packaging	The Mixing Head is packaged in a closed box.
Quality Control	Our Quality Assurance System guarantees the control and traceability at all stages of the manufacturing.
pH Range	1–14



www.merckmillipore.com

Merck Millipore, the M mark and NovAseptic are registered trademarks of Merck KGaA, Darmstadt, Germany. Specifications subject to change without notice.
Lit. No. SP1182EN00 Ver. 3.0 03/2016 DP SBU-11-04677
©2016 EMD Millipore Corporation, Billerica, MA, USA. All rights reserved.
All trademarks belonging to third parties are the property of their respective owners.

To Place an Order or Receive Technical Assistance

In Europe, please call Customer Service:

France: 0825.045.645
Spain: 901.516.645 Option 1
Germany: 01805.045.645
Italy: 848.845.645

United Kingdom: 0870.900.46.45

For other countries across Europe, please call: +44 (0) 115 943 0840

Or visit www.merckmillipore.com/offices

For Technical Service visit:

www.merckmillipore.com/techservice