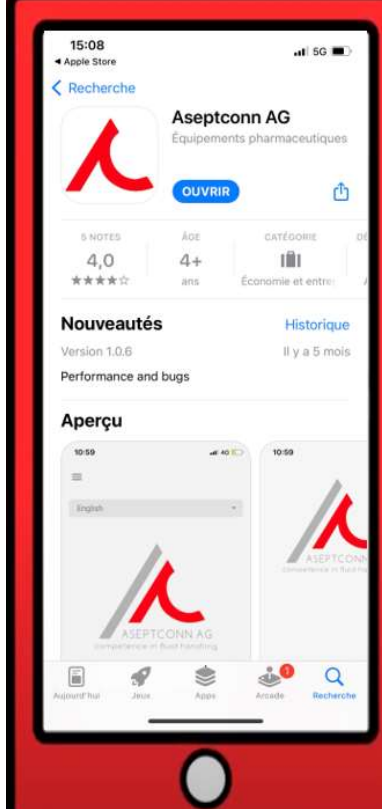

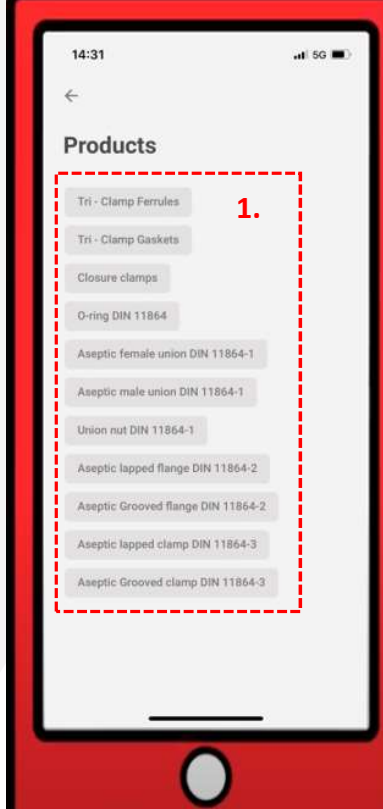


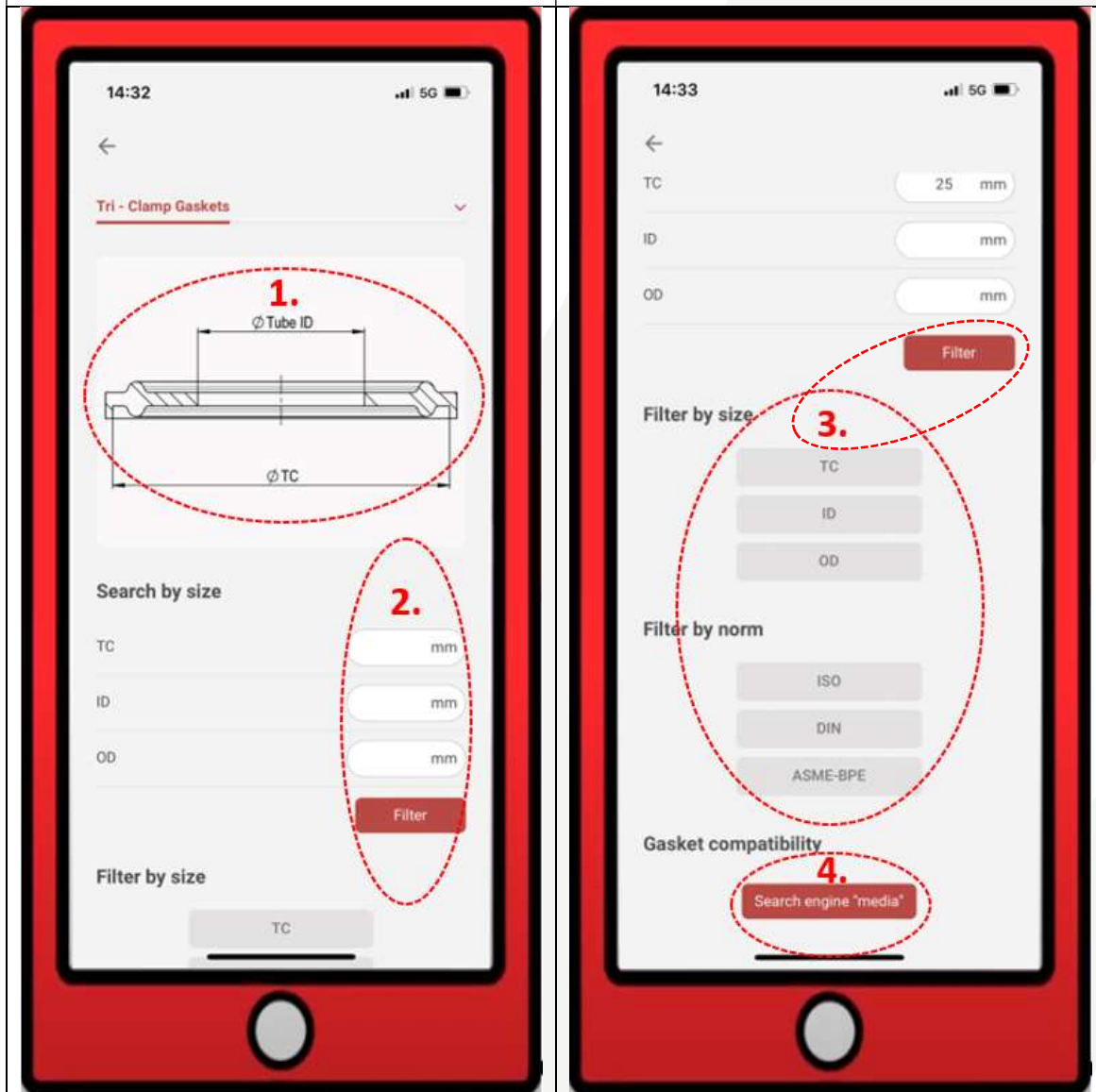
Use of the Aseptconn APP

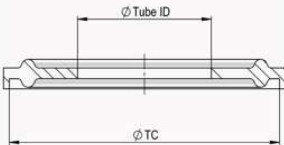
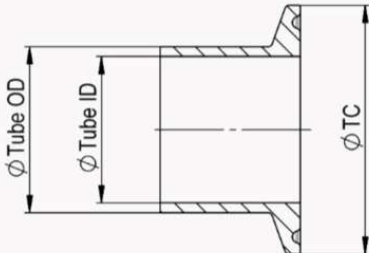


A: Download the application	B: launch the application	C: Select the desired product category
<p>For ANDROID: https://lnkd.in/geRrGyJ For IOS: https://lnkd.in/gPfQUZx</p>	<p>1. Choose the desired language 2. Explore</p>	<p>1. Choose the product you are looking for</p>
		

D: Entering data for information retrieval

1. Take the measurements according to the diagram visible in the application
2. Insert the measurements in the empty fields (a first search can be launched)
3. Filter, If necessary, filter by size or standard
4. For gaskets, find the material best suited to the environment using the chemical compatibility table



E: Identify and find the exact characteristics of the product	F: Request technical information or advice	G: Consult the different parameters according to the drawings available																																																																		
1. Identify the standard and consult the dimensions OR: 2. Identify the dimensions and consult the standard	1. Fill in the fields 2. Send the request	If any information is missing, the drawings with the parameters can be consulted in the different product categories available.																																																																		
<div><div>17:145G</div><div>Tri - Clamp Gaskets</div><div></div><div><table><thead><tr><th>Norm</th><th>TC</th><th>ID</th><th>OD</th></tr></thead><tbody><tr><td>ISO DN6</td><td>25mm*</td><td>7mm*</td><td>10.2mm*</td></tr><tr><td rowspan="3">ISO DN8</td><td>25mm</td><td>10.3mm</td><td>13.5mm</td></tr><tr><td>34mm*</td><td>10.3mm</td><td>13.5mm</td></tr><tr><td>50.5mm</td><td>10.3mm</td><td>13.5mm</td></tr><tr><td rowspan="3">ISO DN10</td><td>25mm</td><td>14mm</td><td>17.2mm</td></tr><tr><td>34mm*</td><td>14mm</td><td>17.2mm</td></tr><tr><td>50.5mm</td><td>14mm</td><td>17.2mm</td></tr><tr><td>DIN DN4</td><td>25mm</td><td>4mm</td><td>6mm</td></tr><tr><td>DIN DN6</td><td>25mm</td><td>6mm</td><td>8mm</td></tr><tr><td rowspan="3">DIN DN8</td><td>25mm</td><td>8mm</td><td>10mm</td></tr><tr><td>34mm*</td><td>8mm</td><td>10mm</td></tr><tr><td>50.5mm*</td><td>8mm</td><td>10mm</td></tr></tbody></table></div></div>	Norm	TC	ID	OD	ISO DN6	25mm*	7mm*	10.2mm*	ISO DN8	25mm	10.3mm	13.5mm	34mm*	10.3mm	13.5mm	50.5mm	10.3mm	13.5mm	ISO DN10	25mm	14mm	17.2mm	34mm*	14mm	17.2mm	50.5mm	14mm	17.2mm	DIN DN4	25mm	4mm	6mm	DIN DN6	25mm	6mm	8mm	DIN DN8	25mm	8mm	10mm	34mm*	8mm	10mm	50.5mm*	8mm	10mm	<div><div>17:145G</div><div><table><tbody><tr><td>ASME-BPE 1/8"</td><td>25mm</td><td>2.06mm</td><td>3.18mm</td></tr><tr><td>ASME-BPE 1/4"</td><td>25mm</td><td>4.57mm</td><td>6.35mm</td></tr><tr><td>ASME-BPE 3/8"</td><td>25mm</td><td>7.75mm</td><td>9.53mm</td></tr><tr><td>ASME-BPE 1/2"</td><td>25mm</td><td>9.4mm</td><td>12.7mm</td></tr><tr><td>ASME-BPE 3/4"</td><td>25mm</td><td>15.75mm</td><td>19.05mm</td></tr></tbody></table></div><div><div>Request information</div><div>1.</div><div><div>Name</div><div>Email</div><div>Phone Number</div><div>Subject</div><div>Message</div></div><div>2.</div><div>Send</div></div></div>	ASME-BPE 1/8"	25mm	2.06mm	3.18mm	ASME-BPE 1/4"	25mm	4.57mm	6.35mm	ASME-BPE 3/8"	25mm	7.75mm	9.53mm	ASME-BPE 1/2"	25mm	9.4mm	12.7mm	ASME-BPE 3/4"	25mm	15.75mm	19.05mm	<div>Example for a tri-clamp ferrule (ID ; OD ; TC)</div> <div>Tri - Clamp Ferrules</div> <div></div>
Norm	TC	ID	OD																																																																	
ISO DN6	25mm*	7mm*	10.2mm*																																																																	
ISO DN8	25mm	10.3mm	13.5mm																																																																	
	34mm*	10.3mm	13.5mm																																																																	
	50.5mm	10.3mm	13.5mm																																																																	
ISO DN10	25mm	14mm	17.2mm																																																																	
	34mm*	14mm	17.2mm																																																																	
	50.5mm	14mm	17.2mm																																																																	
DIN DN4	25mm	4mm	6mm																																																																	
DIN DN6	25mm	6mm	8mm																																																																	
DIN DN8	25mm	8mm	10mm																																																																	
	34mm*	8mm	10mm																																																																	
	50.5mm*	8mm	10mm																																																																	
ASME-BPE 1/8"	25mm	2.06mm	3.18mm																																																																	
ASME-BPE 1/4"	25mm	4.57mm	6.35mm																																																																	
ASME-BPE 3/8"	25mm	7.75mm	9.53mm																																																																	
ASME-BPE 1/2"	25mm	9.4mm	12.7mm																																																																	
ASME-BPE 3/4"	25mm	15.75mm	19.05mm																																																																	