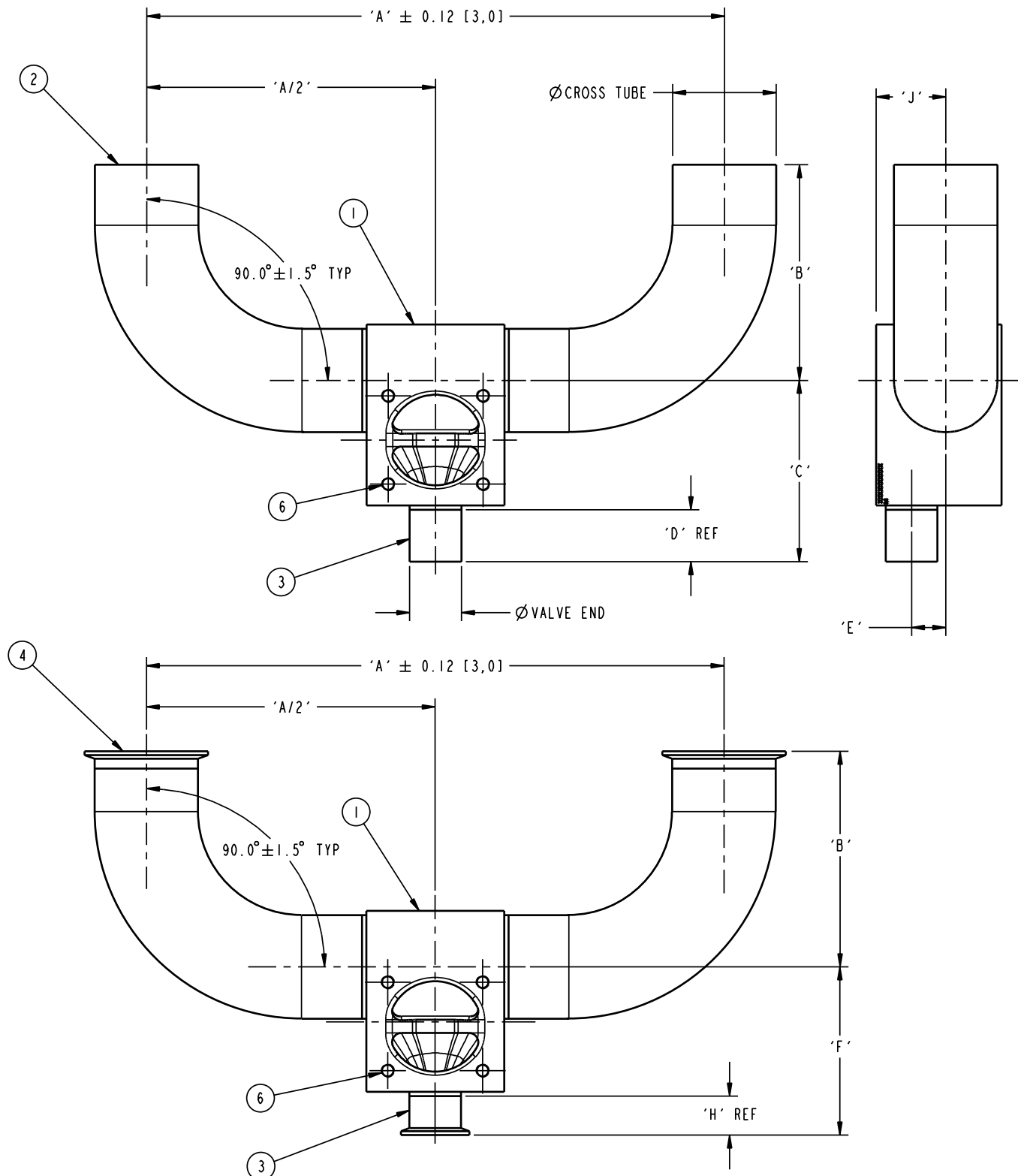


VALVE END	DIM'S	CROSS TUBE							
		0.50 [12,7]	0.75 [19,0]	1.00 [25,4]	1.50 [38,1]	2.00 [50,8]	2.50 [63,5]	3.00 [76,2]	4.00 [101,6]
0.50 [DN15]	'A'	8.25 [209,6]	8.25 [209,6]	8.25 [209,6]	9.75 [247,7]	11.75 [298,5]	13.25 [336,6]	14.75 [374,7]	18.25 [463,6]
	'B'	3.00 [76,2]	3.00 [76,2]	3.00 [76,2]	3.75 [95,2]	4.75 [120,6]	5.50 [139,7]	6.25 [158,8]	8.00 [203,2]
	'C'	3.02 [76,7]	3.16 [80,3]	3.29 [83,6]	3.56 [90,4]	3.82 [97,0]	4.08 [103,6]	4.34 [110,2]	4.85 [123,2]
	'D'	1.50 [38,1]	1.50 [38,1]	1.50 [38,1]	1.50 [38,1]	1.50 [38,1]	1.50 [38,1]	1.50 [38,1]	1.50 [38,1]
	'E'	0.20 [5,1]	0.41 [10,4]	0.56 [14,2]	0.78 [19,8]	0.95 [24,1]	1.10 [27,9]	1.26 [32,0]	1.75 [44,4]
	'F'	2.02 [51,3]	2.16 [54,9]	2.29 [58,2]	2.56 [65,0]	2.82 [71,6]	3.08 [78,2]	3.34 [84,8]	3.85 [97,8]
	'H'	0.50 [12,7]	0.50 [12,7]	0.50 [12,7]	0.50 [12,7]	0.50 [12,7]	0.50 [12,7]	0.50 [12,7]	0.50 [12,7]
	'J'	0.56 [14,2]	0.77 [19,6]	0.93 [23,6]	1.14 [29,0]	1.32 [33,5]	1.46 [37,1]	1.63 [41,4]	2.12 [53,8]
0.75 [DN20]	'A'	8.25 [209,6]	8.25 [209,6]	9.75 [247,7]	11.75 [298,5]	13.25 [336,6]	14.75 [374,7]	18.25 [463,6]	
	'B'	3.00 [76,2]	3.00 [76,2]	3.75 [95,2]	4.75 [120,6]	5.50 [139,7]	6.25 [158,8]	8.00 [203,2]	
	'C'	3.25 [82,6]	3.38 [85,9]	3.65 [92,7]	3.91 [99,3]	4.17 [105,9]	4.43 [112,5]	4.95 [125,7]	
	'D'	1.50 [38,1]	1.50 [38,1]	1.50 [38,1]	1.50 [38,1]	1.50 [38,1]	1.50 [38,1]	1.50 [38,1]	
	'E'	0.26 [6,6]	0.46 [11,7]	0.73 [18,5]	0.93 [23,6]	1.09 [27,7]	1.23 [31,2]	1.68 [42,7]	
	'F'	2.25 [57,2]	2.38 [60,5]	2.65 [67,3]	2.91 [73,9]	3.17 [80,5]	3.43 [87,1]	3.95 [100,3]	
	'H'	0.50 [12,7]	0.50 [12,7]	0.50 [12,7]	0.50 [12,7]	0.50 [12,7]	0.50 [12,7]	0.50 [12,7]	
	'J'	0.70 [17,8]	0.89 [22,6]	1.17 [29,7]	1.36 [34,5]	1.53 [38,9]	1.67 [42,4]	2.11 [53,6]	
1.00 [DN25]	'A'	8.25 [209,6]	9.75 [247,7]	11.75 [298,5]	13.25 [336,6]	14.75 [374,7]	18.25 [463,6]		
	'B'	3.00 [76,2]	3.75 [95,2]	4.75 [120,6]	5.50 [139,7]	6.25 [158,8]	8.00 [203,2]		
	'C'	3.63 [92,2]	3.90 [99,1]	4.16 [105,7]	4.42 [112,3]	4.68 [118,9]	5.19 [131,8]		
	'D'	1.50 [38,1]	1.50 [38,1]	1.50 [38,1]	1.50 [38,1]	1.50 [38,1]	1.50 [38,1]		
	'E'	0.28 [7,1]	0.59 [15,0]	0.81 [20,6]	0.98 [24,9]	1.15 [29,2]	1.44 [36,6]		
	'F'	3.25 [82,6]	3.52 [89,4]	3.78 [96,0]	4.04 [102,6]	4.30 [109,2]	4.81 [122,2]		
	'H'	1.12 [28,4]	1.12 [28,4]	1.12 [28,4]	1.12 [28,4]	1.12 [28,4]	1.12 [28,4]		
	'J'	0.96 [24,4]	1.26 [32,0]	1.48 [37,6]	1.65 [41,9]	1.82 [46,2]	2.11 [53,6]		
1.50 [DN40]	'A'	11.75 [298,5]	13.75 [349,3]	15.25 [387,4]	16.75 [425,5]	20.25 [514,4]			
	'B'	3.75 [95,2]	4.75 [120,6]	5.50 [139,7]	6.25 [158,8]	8.00 [203,2]			
	'C'	4.46 [113,3]	4.73 [120,1]	4.99 [126,7]	5.25 [133,4]	5.76 [146,3]			
	'D'	1.50 [38,1]	1.50 [38,1]	1.50 [38,1]	1.50 [38,1]	1.50 [38,1]			
	'E'	0.23 [5,8]	0.55 [14,0]	0.79 [20,1]	0.99 [25,1]	1.32 [33,5]			
	'F'	4.08 [103,6]	4.35 [110,5]	4.61 [117,1]	4.87 [123,7]	5.38 [136,7]			
	'H'	1.12 [28,4]	1.12 [28,4]	1.12 [28,4]	1.12 [28,4]	1.12 [28,4]			
	'J'	1.26 [32,0]	1.58 [40,1]	1.82 [46,2]	2.02 [51,3]	2.35 [59,7]			
2.00 [DN50]	'A'	14.75 [374,7]	16.25 [412,8]	17.75 [450,9]	21.25 [539,8]				
	'B'	4.75 [120,6]	5.50 [139,7]	6.25 [158,8]	8.00 [203,2]				
	'C'	5.29 [134,4]	5.56 [141,2]	5.82 [147,8]	6.33 [160,8]				
	'D'	1.75 [44,4]	1.75 [44,4]	1.75 [44,4]	1.75 [44,4]				
	'E'	0.29 [7,4]	0.60 [15,2]	0.84 [21,3]	1.22 [31,0]				
	'F'	4.66 [118,4]	4.93 [125,2]	5.19 [131,8]	5.70 [144,8]				
	'H'	1.12 [28,4]	1.12 [28,4]	1.12 [28,4]	1.12 [28,4]				
	'J'	1.60 [40,6]	1.92 [48,8]	2.15 [54,6]	2.54 [64,5]				

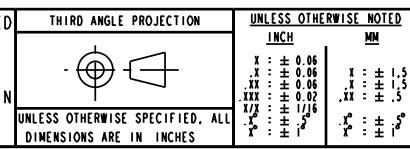
LIST OF MAJOR COMPONENTS			
ITEM	DESCRIPTION	MATERIAL	QTY
1	BODY-ZSBT	SS 316L	1
2	TUBING-ELBOW 90° CROSS TUBE END	SS 316L	AR
3	TUBING-VALVE END 16G	SS 316L	1
4	FERRULE-CROSS TUBE END TC	SS 316L	AR
5	FERRULE-VALVE END TC	SS 316L	1
6	STUD		4



P1 P2  
P3

PURE-FLO ORDER: - ITEM: -  
 CUSTOMER: -  
 CUSTOMER PO: -  
 OTHER INFO: -  
 ISSUED BY: - CERTIFIED BY: -

THIS DOCUMENT IS THE SOLE PROPERTY OF ITT INDUSTRIES, INC., OR ITS SUBSIDIARY, AND IS PROVIDED SUBJECT TO RETURN. IT IS ISSUED IN STRICT CONFIDENCE AND SHALL NOT BE REPRODUCED, OR COPIED, OR DISCLOSED IN WHOLE OR IN PART, OR USED AS THE BASIS FOR THE MANUFACTURE OR SALES OF APPARATUS OR PARTS TO WHICH THE DOCUMENT RELATES, WITHOUT THE EXPRESS WRITTEN CONSENT OF ITT INDUSTRIES INC., OR ITS SUBSIDIARY. THIS LEGEND SHALL BE MARKED ON ANY REPRODUCTION HEREOF, IN WHOLE OR IN PART. ALL RIGHTS TO THE INFORMATION AND DESIGN DISCLOSED HEREIN ARE RESERVED TO ITT INDUSTRIES, INC., OR ITS SUBSIDIARY.



UNLESS OTHERWISE NOTED		DATE	BY	STANDARD-EZSBTVV E-SERIES U-BEND
INCH	MM	DWN 06/18/08	MJM	WEIR 00.50 - 02.00
.X : ± 0.06	.X : ± 1.5	CHKD 06/18/08	JRD	VERTICAL RUN x VERTICAL VALVE
.XX : ± 0.06	.XX : ± 1.5	APVD 06/18/08	JRD	WT: -
.XXX : ± 0.02	.XXX : ± 0.5			ECN# 11862
1/32 : ± 0.015	1/32 : ± 0.4			MASTER DWG 009665
1/16 : ± 0.01	1/16 : ± 0.25			

ITT Pure-Flo  
www.ittpureflo.com

SITE D 009665 REV A  
PA D SHEET 1 OF 1